

PONCE DE LEON INLET LIGHT STATION

Volume XXX • Issue 4
October, 2006

The Quarterly Newsletter of the Ponce de Leon Inlet Lighthouse Preservation Association, Inc.

4931 South Peninsula Drive • Ponce Inlet, Florida 32127 • (386) 761-1821
www.ponceinlet.org • www.ponceighthousestore.org • lighthouse@ponceinlet.org

FILIBUSTERING TO CUBA

Derived from the Dutch word *vribooter* (freebooter) and the later French and Spanish *flibustier* and *filibustero*, the use of the term filibuster has evolved over the years to describe something quite different than it did when it first came into use. In today's political arena, a filibuster refers to the act of extending legislative debate over a proposal in order to delay or prevent a vote on its passage.

Despite its current political connotation, filibuster first came into popular use in the mid-1800s as a term used to describe privately funded military campaigns against foreign nations. Insurgent activities such as these often occurred in the early years of the U.S. history and were often staged against the neighboring Spanish colonies of Texas, Louisiana, and East and West Florida. Filibusters were often promoted as legitimate campaigns to fight tyranny, Spanish interference in U.S. trade along the Mississippi River, and what was deemed as the hostile

actions of Spanish officials along the U.S - Florida border. Many of these filibustering expeditions resulted in open warfare and the acquisition of new lands for the United States including Texas and Florida.

In May of 1850, and again in August 1851, a Venezuelan native named Narcisco Lopez, armed with the financial support of Americans sympathetic to Cuba's desire for independence or interested in the expansion of U.S. territory in the pro-slavery South, landed on the island of Cuba with hundreds of men recruited in the United States. Although his first expedition initially met with success, the "freedom fighters" under the leadership of "General" Lopez were soon overwhelmed by the Spanish army and forced back into the sea.

Undaunted by his previous failures to secure Cuban independence, Lopez remained intent on overthrowing Spanish rule and soon organized a second filibustering expedition to the island. Landing at Bahia Honda in August, 1851, Lopez and his army were soon defeated at the village of Las Pozas. Captured by the Spanish, Lopez and 51 of his followers were placed before a firing squad and publicly executed. By the time of his death, the term "filibuster" had become widely accepted as the appropriate title for the privately funded military expeditions launched against foreign governments.

The struggle for Cuban independence continued for nearly thirty years following Lopez's ill-fated expedition, with filibustering playing an important role. In 1873, during Cuba's first war of independence known as the "Ten Years' War" (1868-1878), the steamer *Virginius*,

The Military 1 Remington 43 Caliber Rolling Block Rifle, Spanish Export, was a common firearm smuggled into Cuba by Filibusters such as the Commodore.

Citizens of the great Republic, You are going to give Cuba the freedom for which your example has taught her to sigh; to strike from the beautiful limbs of the Queen of the Antilles the chains which have for too long degraded her, in subjection to a foreign tyranny which is an outrage upon the ages; to do for your Cuban brethren what a Lafayette, a Steuben, a Kosciusko and a Poluski are deathless in history for having aided you; and eventually to add another glorious star to the banner which already waves to the admiration of the whole world, over the "Land of the Free and the Home of the Brave."

Excerpt from letter written to American citizens by Gen. Narcisco Lopez to rally support for Cuba's cause.

sailing from New York with arms and ammunition for Cuban rebels, was intercepted by the Spanish cruiser *Tornado* off the coast of Jamaica. Arrested and charged with piracy, the *Virginius'* captain, Joseph Fry, and 52 others crewmembers of American, British, and Cuban nationality were tried by a military tribunal and summarily shot. Only through the quick intervention of the British warship *HMS Niobe* were the executions of the remaining 103 survivors averted.

cont'd on page 4 >>



FALL & WINTER, 2006 HOURS OF OPERATION:

Following Labor Day (September 4th, 2006) Ponce Inlet Lighthouse hours of operation will be from 10:00 a.m. until 6:00 p.m. (last admission 5:00), Sunday through Saturday. These hours of operation will remain in effect to Memorial Day, May 28th, 2007. Exceptions to our normal hours of operation through December are:

Nov. 24th - 26th: **Thanksgiving Holiday Extended Hours**
10:00 a.m. to 7:00 p.m. (last admission at 6:00)

Dec. 24th: **Early Close**
(Christmas Eve) 10:00 a.m. to 4:00 p.m. (last admission at 3:00)

Dec. 25th: **Closed for Holiday**
(Christmas Day)

Dec. 26th - 30th: **Christmas Holiday Extended Hours**
10:00 a.m. to 7:00 p.m. (last admission at 6:00)

UPCOMING MEETINGS:

Oct. 11, 2006 Budget Finance Committee Meeting
8:30 a.m. in the Gift Shop Conference Room

Oct. 16, 2006 Board of Trustees and Annual Membership Meeting*
7:30 p.m. in the Gift Shop Conference Room

Nov. 20, 2006 Board Meeting
7:30 p.m. in the Gift Shop Conference Room

Dec. 18, 2006 Board Meeting
7:30 p.m. in the Gift Shop Conference Room

* Board of Trustee Meetings are open to the public. We welcome your attendance and participation.

www.ponceinlet.org

(386) 761-1821

Ponce Inlet, Florida 32127

4931 South Peninsula Drive

Ponce de Leon Inlet Lighthouse Preservation Association, Inc.

Non-Profit Organization
U.S. Postage Paid
Daytona Beach, FL
Permit 400

The Ponce de Leon Inlet Lighthouse Preservation Association is dedicated to the preservation and dissemination of the maritime and social history of the Ponce de Leon Inlet Light Station.

2006 Board of Trustees

- Wilda Hampton, Trustee Emerita
Robyn Hurd, President
Tami Lewis, 1st Vice President
Bill Merrell, 2nd Vice President
Bob Riggio, Treasurer
Tony Girolami, Secretary
Cheryl Cunningham
Earl Davis
Gladys Davis
Tara (Terri) Lamb
Barbara LaVelle
Budd Solano

Advisory Committee

- Ginger Bayer
Maddy Elbers
Edson Graham
Judy Huggins
Ellen Pagliarulo

Museum Staff

- Ann Caneer, Executive Director
Ed Gunnlaugsson, Director of Operations
Ellen Henry, Curator
Mike Bennett, Project Coordinator/Historian
Bob Callister, Programs Manager
Tom Zane, Registrar
Bethel Blais, HR/ Bookkeeping
Nancy Vigorito, Administrative Assistant

Maintenance

- Pat Satterfield, Director of Maintenance
Jimmie Vanover, Ass't. Dir. of Maintenance
Ed Coffman
Susan Junk
Bob McLean
Bruce McLean
Ed Milano
Dan Paris
Budd Solano
Angelo Vigorito

Gift Shop

- Carol Mumola, Manager
Connie Bach, Assistant Manager
Donna Doan
Fran Greene
Gail Harvey
Janet McSharry
Cricket Pownall
Sharon Strommel
Jeanine Tatum
Bill Teasley

Beaconettes: Shelly & Nelly

The Light Station is published quarterly by the Ponce de Leon Inlet Lighthouse Preservation Association, Inc.

Subscription is a benefit of membership in the association. The Light Station welcomes letters and comments from our readers.

MEMBER:

- AMERICAN ASSOCIATION OF MUSEUMS
AMERICAN ASSOCIATION FOR STATE AND LOCAL HISTORY
FLORIDA ASSOCIATION OF MUSEUMS
FLORIDA LIGHTHOUSE ASSOCIATION
FLORIDA TRUST FOR HISTORIC PRESERVATION
NATIONAL TRUST FORUM
U.S. LIGHTHOUSE SOCIETY
PORT ORANGE & SOUTH DAYTONA CHAMBER OF COMMERCE

FROM THE EXECUTIVE DIRECTOR

We are proud to announce that several new exhibits have been completed throughout our historic Light Station. Curator Ellen Henry and the maintenance staff worked hard over the past several months to design, build, and install new Beach Racing and Famous Filibusters exhibits in buildings 4 and a 5. The new designs provide for greater accessibility and traffic flow and feature new display cases and text panels that allow for better interpretation of their subjects. We have also installed a new climate control system in the woodshed of building 9, where we are currently designing a new WWII, Radio Room, and Weather Station exhibit, to help ensure the stabilization and preservation of existing and future artifacts.

As many of our members know, T.C. the Lighthouse Cat passed away in June after serving over 15 years as Lighthouse Ambassador. The staff buried T.C. in the small graveyard behind the Principal Keeper's Dwelling next to the other lighthouse cats that have passed away over the years. We are happy to announce, however, that we acquired two new black and white kittens through the generosity of the Ponce Inlet Corvette Club and Harvey Bach, husband of Gift Shop Assistant Manager Connie Bach. The Corvette Club donated the kittens (named Shelly and Nelly) to the Lighthouse shortly after T.C.'s death and paid for their shots and spaying fees. Veterinarians Dr. Kathleen Bartos and Dr. Susan Kluth of Halifax



Members of the Ponce Inlet Corvette Club pose with the Beaconettes, the newest lighthouse cats, Nelly and Shelly.

Veterinarian Clinic loaned a large cage for the kittens to live in while they became acclimated to their new home here at the Lighthouse. Our thanks go out to all parties for their generosity and assistance in helping us acquire our new feline friends that the gift shop staff have nicknamed the "Beaconettes".

The Ponce de Leon Inlet Lighthouse was proud to host the annual Florida Lighthouse Association's (FLA) Strategic Planning Session on June 17. The meeting was attended by many FLA members including 27 officers and numerous 3s including 3 of the Association's founding members, 3 directors from the 6 Florida lighthouses open to the public, 3 of the FLA's past 5 Presidents, and 3 of the 4 District Commissioners. The meeting addressed many issues facing lighthouses throughout Florida and the future goals of the FLA. Our continued participation in organizations such as the FLA demonstrates our continued commitment to the preservation our Light Station and all of Florida's historic and cultural resources.

Chuck Spitznagel from Cathedral Stone, one of the leaders in historic masonry restoration, visited the Light Station once again in August. As many may remember from our July Newsletter, Mr. Spitznagel came down from Maryland in April to teach the staff about the proper materials and techniques used for restoring historic structures. Mr. Spitznagel, who has allowed lighthouse staff to benefit from his years of experience on numerous occasions, made special arrangements to drive down to certify the restoration team in historic masonry repair. His generosity allowed us to avoid a trip to Maryland for the training and saved us thousands of dollars in travel and lodging fees in the process. As always, our thanks go out to both Mr. Spitznagel and Cathedral Stone for their continued assistance and guidance in helping us conserve our historic masonry dwellings.

We are happy to announce that our new Memorial Brick fund-raising program has met with a positive response from members and visitors alike. Initiated in July, the Memorial Brick program will provide the association with much needed funding for future exhibits and conservation efforts.

I encourage all members to consider purchasing a memorial brick in support of the Light Station which will be used in the new brick walkway leading out of the gift shop. With Christmas right around the corner, these unique bricks would make a wonderful gift or memorial for family, friends or you own special occasion. Have a wonderful holiday season and we hope to see you at the Lighthouse soon.

Sincerely,
Ann Caneer
Executive Director

Happy Holidays
The Ponce Inlet Lighthouse would like to wish all of our readers a wonderful holiday season and a happy new year. Don't forget to visit our online store at www.poncelighthousestore.com for your holiday shopping needs. Also, don't forget that our memorial bricks make wonderful gifts and momentos for those hard to buy for loved ones.

JOIN THE PONCE DE LEON INLET LIGHTHOUSE PRESERVATION ASSOCIATION

A general annual membership includes:

- Free admission to the museum and lighthouse during regular hours of operation
10 percent discount in the museum gift shop and online store
One subscription to The Light Station quarterly newsletter
Invitations to special events
Volunteer opportunities

Membership categories:

- General \$20
Senior \$10
Student \$10
Family \$40

Please complete the entire form to enroll, or join online at www.poncelighthousestore.org.

Select type of membership:

- General \$20
Senior \$10
Student \$10
Family \$40
2nd Assistant Keeper \$100
1st Assistant Keeper \$200
Principal Keeper \$500
Corporate Lampist \$500

Name:
Address 1:
Address 2:
City: State: ZIP:
Phone:
E-mail:

Office use only

Begins Ends

- 2nd Assistant Keeper \$100
1st Assistant Keeper \$200
Principal Keeper \$500
Corporate Lampist \$500

PONCE INLET LIGHTHOUSE MEMBERSHIP COUPON
20% OFF ANY SINGLE PURCHASE

20% discount not valid towards purchase of previously reduced priced items and memorial bricks. Limit one coupon per member quarterly. Please present coupon to cashier at time of purchase. Discount limited towards 1 item only. For more information regarding memberships please see gift shop staff. Expires December 31st, 2006.

For a family membership, you may list an additional adult and the names of all children:

Adult:
Children:

(List any additional names on a separate sheet.)

We will contact 1st Assistant Keeper, Principal Keeper or Corporate Lampist members to obtain gift membership and company principal information.

Membership enclosed: \$
Donation enclosed: \$
Total enclosed: \$

Please charge my: (check one)

Visa MasterCard
CC#:
Exp. Date:
Signature:

Or, make check payable to:

Ponce de Leon Inlet Lighthouse Preservation Association, Inc.
4931 S. Peninsula Dr., Ponce Inlet, FL 32127

Thank You for Your Generous Support!

VOLUNTEER AND EDUCATION NEWS



Now that summer is drawing to a close we are looking forward to another active tour season at the Lighthouse. The last quarter of 2006 will be highlighted by four special events that could never take place without the help of our dedicated volunteers (see the Events Calendar for particulars).

We "kicked off" our new volunteer season by introducing the Volunteer Awards Program. The program, designed to recognize volunteers for their many hours of service, is our way of saying thank you for their continued contribution to the Ponce de Leon Light Station. Lighthouse volunteers will be presented with special awards including pins and volunteer recognition bricks commensurate to a set number of volunteer hours completed at the light station.

Three special events were held at the Lighthouse over the past few months. The Memorial Day celebration featured live acoustical music by Joe and Susan Atti, a variety of family activities, and a visit by the "Old Lighthouse Keeper" and his daughter. June 9th was "Family Fun Friday". In addition to our regular tours, the Lighthouse provided visitors with five fun family-oriented workshops and live entertainment throughout the grounds.

The Lighthouse hosted a brand new event on June 23rd. "Girl Scout Day" was developed to give local Girl Scouts the opportunity to work on their requirements for three lighthouse related badges. These badges were developed by the Lighthouse specifically for this event and for Central Florida's Girl Scouts. We are happy to say that we had over 100 area scouts participate in the initial event. Among the many activities provided for our visitors was interactive storytelling that had members of the audience reading dialog and "sound effects" to bring the story to life. The day proved to be both educational and lots of fun!

We would like to offer our thanks to all of the Volunteers who helped make these events a success.



Girl Scout volunteer helps add drama to a story during "Theatre in the Woods".

THANK YOU

The Ponce de Leon Inlet Lighthouse would like to thank the many individuals who have contributed to our collection of artifacts, historic documents and images over the past 3 months. Their generous donations add to our knowledge and understanding of local, regional and lighthouse history in addition to enriching many of our museum's interpretive exhibits.

Dan Millsbaugh, a Professor of Art at University of North Carolina in Asheville, recently gifted us with a magnificent collection of small Fresnel lenses and lens inserts. Several of the lenses are quite old and were originally used on buoy lights. Museum members Mr. and Mrs. James Wetherbee provided a fine collection of antique clothing to the Lighthouse, including a World War I Navy cap and middie, while Judy Burrows and the New Smyrna Museum of History donated a rare set of copies of the lighthouse's construction plans.

Very special thanks also go out to Chuck Spitznagel of Cathedral Stone Products for his continued guidance in our ongoing brick restoration program. Chuck was here on August 14th and 15th to provide further training in the repair of historic masonry. Museum staff members who are now certified in the use of Jahn mortars for masonry repair are



Chuck Spitznagel of Cathedral Stone demonstrates the proper technique for repairing historic masonry to Pat Sattersfield.

Ed Gunn, Pat Satterfield, Ed Milano, Mike Bennett, and Jimmie Vanover.

The Ponce Inlet Lighthouse would also like to express our sincere gratitude to the following individuals for their recent gifts:

We would like to thank Vickie Boyle of Palatka for her gracious donation of Native American artifacts; John Daily for contributing clippings and an early version of our museum brochure; Earl and Gladys Davis for their gift of a vintage refrigerator bottle and porcelain doll; Heide Fuchs for donating vintage kitchen, bathroom and domestic items; Dr. Charles Fain for presenting us with several historic documents and an early 1930s photo of Sir Malcolm Campbell, taken by R.H. LeSesne; and Ray Chaikie who provided us with an early 20th century hand-cranked grinding wheel. Our thanks also goes out

to Julie Davis for her regular donation of pottery, bottles, and other historic items from the nearby riverbank.

We would also like to thank Harvey Bach and the Ponce Inlet Corvette Club for helping us acquire Nelly and Shelly (otherwise known as the "Beaconettes"), our new lighthouse cats. Halifax Veterinary Clinic provided a special cage to help the cats acclimate to their new home, and we thank Dr. Bartos and Dr. Kluth for their ongoing veterinary care.

WISH LIST

The Ponce de Leon Inlet Lighthouse continues its search for Civil War artifacts, especially those related to Civil War activity in Florida, and for WWII era items, particularly U.S. Coast Guard uniforms, that will be used in our up-coming WWII/Radio Room exhibit. We would sincerely appreciate any artifact donations related to these two historic periods for our collections.

Of special interest, any information our readers may have regarding where we could find a WWII vintage shore to ship radio beacon transmitter and receiver for our radio room exhibit would be greatly appreciated. Ham Radio operators and enthusiasts could prove very helpful in this

endeavor. Children's clothing, toys, and school-related items would also be very welcome. And, as always, lighthouse artifacts are gratefully received.

The Association is also in need of volunteers to help with our masonry restoration project throughout the station. Volunteers will receive full training on historic masonry restoration from certified staff. For those of you with computer skills, your data entry help would be gratefully appreciated for our *Lighthouses of the World Interactive Kiosk* project. If you are interested in lending a much needed hand please contact Ellen Henry at 386-761-1821 or by email at ellen@ponceinlet.org. We appreciate the continued contributions of all our volunteers and look forward to having you join the team.

PONCE INLET EMPLOYEES DISCOVER ARTIFACT

Ponce Inlet Public Works employees Keith Gunter (standing at right) and Mike Smith (left) recently presented Curator Ellen Henry with an artifact they discovered while performing their duties. The object, identified as a pottery fragment, came from a type of earthenware typically used here around the time of the Light Station's construction in the late 1800s. Mr. Gunter and Mr. Smith discovered the artifact while working on a community beautification project at the Davies Lighthouse Park. Our thanks go out to both gentlemen for helping preserve our community's heritage. We encourage everyone to follow Keith's and Mike's conscientious attitude and donate any artifacts they may discover while exploring our beautiful town and parks to the museum for the future enjoyment of all.



Ellen Henry accepts artifact from Keith Gunter and Mike Smith.

NEW KEEPERS

We would like to give extra special thanks to our new Keepers:

Corporate Lampists

Brown and Brown, Inc.
Daytona Beach, FL

Boondocks Restaurant
Wilbur by the Sea, FL

Brochure Displays
Daytona Beach, FL

Caring Cleaners
Daytona Beach, FL

Cobb & Cole
Daytona Beach, FL

Hall Construction Co Inc.
Daytona Beach, FL

Inlet Harbor Restaurant
Ponce Inlet, FL

Inlet Harbor Realty
Ponce Inlet, FL

Racing's North Turn
Ponce Inlet, FL

Raymond James and Associates, Inc.
Daytona Beach, FL

Stewart Marchman Center
Daytona Beach, FL

Volusia Properties
Daytona Beach Shores, FL

Wickersham & Bowers
Daytona Beach, FL

Principal Keepers

Frederick & Barbara Treadway
Ponce Inlet, FL

1st Assistant Keepers

Cheryl, Jim, & Shamus Cunningham
Ponce Inlet, FL

Linda Downs
Orlando, FL

Anthony Girolami
Ponce Inlet, FL

Edson Graham
Ponce Inlet, FL

Barbara LaVelle & Family
Ponce Inlet, FL

Eric, Mari, Neil & Dain Owen
Marietta, GA

Patrick and Debbie Pawling
Hamilton, OH

Sunshine State Community Bank
Port Orange, FL

2nd Assistant Keepers

ReRe, Brian, Ariel & Bridget Anderson
Port Orange, FL

Bruce & Janet Babbitt
Danville, IN

Command Medical Products
Ormond Beach, FL

Kelly & Taylor Crumley
Long Grove, IL

Turget & Martha Dervish
Ponce Inlet, FL

Michael, Lauren, & Lisa Elsberry
Ponce Inlet, FL

Dennis & Zachary Engel
Owotonna, MN

Janice, Dana, & Alain Fredey
Oviedo, FL

Robert, Dianne, Robert J., & Scott Gilpatrick
South Daytona, FL

Cliff & Kim Greene
Minnetonka, MN

Lauren Grotzinger
Kalamazoo, MI

Mark & Karen Hudson
Mims, FL

Dr. Herbert & Ruth Kerman
Daytona Beach Shores, FL

John L. & Patricia Ann La Belle
Ponce Inlet, FL

Lester & Tami Lewis & Family
Ponce Inlet, FL

Bob & Brenda Lindstrom
Woodstock, GA

Donna Lough
Depew, NY

Wendy Michael
Daytona Beach, FL

Alan & Mary Ann Redinger
Ponce Inlet, FL

Philip A. Rhodes
Ponce Inlet, FL

Ernest & Margaret Rieth
Ponce Inlet, FL

Robert, Margie, Robert Jr., & Tony Riggio
Ponce Inlet, FL

William & Alice Rippey
Port Orange, FL

Diane Schamay
Ponce Inlet, FL

Frederic Schaub
Winter Park, FL

Virginia Schow
New Smyrna Beach, FL

Robert & Mary Ruth Trump
Plymouth, IN

EVENTS CALENDAR Oct.-Dec., 2006

Wednesday, Oct. 4

Special Events from
10:00 a.m. - 4:00 p.m.

Thursday-Sunday,

Oct. 19 - 22

Special Events from
10:00 a.m. - 5:00 p.m.

Friday, Nov. 24

Special Events from
11:00 a.m. - 3:00 p.m.

Special Holiday Hours

Saturday, Dec. 16

Special Events from
10:00 a.m. - 7:00 p.m.

Monday, December 25

Homeschool Day (in partnership with the Marine Science Center)

- Educational Workshops
- Meet Historic Characters
- Marine science labs

Advance registration required, and there is special admission for this event. Please see www.ponceinlet.org for more information.

Biketoberfest

- Guided Tours from 12-2 p.m.

Included in cost of regular admission, no advance reservations required.

Thanksgiving Gifts at the Lighthouse

- Fun workshops
- Guided Tours
- Live Entertainment
- Meet the 1930s Lighthouse Keeper
- Canaveral Lens Demonstration

Included in cost of regular admission, no advance reservations required.

The Light Station will be open from 10:00 to 7:00 (with the last admission to the museum at 6 pm) on November 24, 25, and 26, & again on December 26, 27, 28, 29, and 30th. The Lighthouse will close early on December 24th at 4:00 p.m.

An 1890 Holiday at the Lighthouse

- Make 1890 era Christmas Ornaments
- Meet the 1930s Lighthouse Keeper
- Guided Tours
- Live Entertainment (10 a.m. - 1 p.m.)
- Receive 50% off the Ponce Inlet Light Station's commemorative ornament with your paid admission, while supplies last.
- Free admission from 5 - 7p.m. Included in cost of regular admission, no advance reservations required.

Christmas Day

The lighthouse is closed for the day but will resume regular operating hours on December 26. We will be open New Year's Eve day and New Year's Day. Happy Holidays!

FILIBUSTERING, CONT'D.

In return for the crew's release, the United States Government was forced to pass strict laws that would prevent filibustering expeditions from being launched from U.S. soil again.

These laws, however, did little to discourage or deter future filibustering expeditions to Cuba. The "Ten Years' War" ended in 1878 with Spain promising reforms and greater autonomy for the island. With the exception of the abolition of slavery, most of these reforms were not carried out. Cuban revolutionary leaders, many living as exiles in the United States, continued to seek aid from Americans motivated by either a genuine desire to help them achieve independence or concerned for their own economic interests in the island's agricultural and sugar processing industries.

In 1895, the Cuban *Junta*, or leadership committee, in New York City, launched a second war of independence under the leadership of Jose Marti. The new revolution met with much greater success than previous ones but at a great cost. During the War of 1895, Cuba lost one sixth of its population to combat and disease. With the continued support of American sympathizers who assisted the war effort by smuggling in much needed arms, ammunition and supplies aboard gun-running ships called "filibusters", Cuba found itself closer to victory than ever before.

Three of the most famous United States filibustering ships were the *Dauntless*, *Three Friends*, and *Commodore*. The *Dauntless* was a steam tug captained by John "Dynamite Johnny" O'Brien, a man whose exploits in outmaneuvering Spanish ships and the vessels of the United States Revenue Cutter Service were legendary.

The *Three Friends* and the *Commodore* were also steam tugs. The *Three Friends* had the distinction of being owned and piloted by Napoleon Bonaparte Broward who built her with the help of his brother Malcolm and friend, George DeCottes (hence the ship's name). Credited with participating in at least eight clandestine voyages to Cuba, Broward became well known throughout the state of Florida for his filibustering activities and was later elected Governor.



The famous filibustering vessel Commodore in Jacksonville, FL

The *Commodore*, measuring 123 feet long and weighing 178 tons, was regarded as the finest filibuster in the fleet. Driven by a single steam engine with a 26-inch cylinder and an 80-inch stroke, the *Commodore* was capable of maintaining 12 knots for over a week, which by the standards of the day was very fast indeed. Built in Philadelphia, she was purchased by the New York Cuban *Junta* and sent to Jacksonville, Florida.

On December 31, 1896, the pride of the Cuban *Junta* fleet set sail from Jacksonville loaded with 15 tons of arms, ammunition and supplies in rough seas. Having ran aground twice before reaching the open Atlantic, the crew soon found that the ship was taking on water. Unable to stem the flow, the captain ordered his crew to abandon ship. By early morning the survivors watched as the *Commodore* sank approximately 12 miles offshore of Daytona Beach with men still upon her deck.



Steven Crane, author of the Red Badge of Courage and The Open Boat

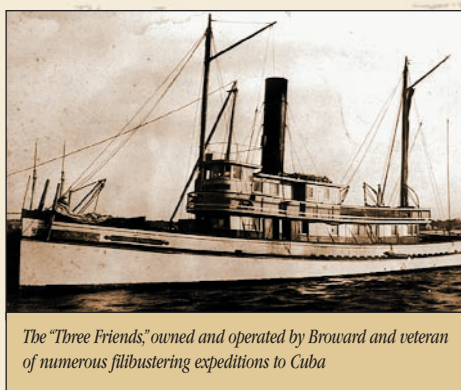
Among the crew was Stephen Crane, author of *The Red Badge of Courage*. Traveling as an undercover correspondent for the New York Press, Crane found himself in a ten foot dinghy with the injured Captain, the cook, and crewman Billy Higgins. The small band of men spent over 30 hours struggling to reach shore near Daytona Beach. Crane immortalized his shipwreck experience in the short story "The Open Boat," wherein he describes rowing towards the only thing visible on the vast horizon - the lighthouse at Mosquito (Ponce) Inlet.

At the top of the another wave the correspondent did as he was bid, and this time his eyes chanced on a small, still thing on the edge of the swaying horizon. It was precisely like the point of a pin. It took an anxious eye to find a lighthouse so tiny."

Stephen Crane "The Open Boat"

The Cubans had nearly won the war when, in February 1898, the United States sent the battleship *USS Maine* to Havana Harbor to protect United States property and to send a thinly veiled warning to Cuban rebels who were voicing concerns over future American involvement in Cuban affairs. Shortly after arriving, the *Maine* mysteriously exploded and sank.

Porthole recovered from the wreck of the Commodore and on display at the Ponce Inlet Lighthouse museum



The "Three Friends," owned and operated by Broward and veteran of numerous filibustering expeditions to Cuba



Newspaper Article from 1897 telling of the Commodore's sinking and Steven Crane's ordeal

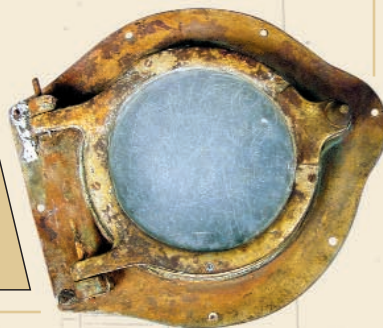


Remnants of the Sextant used by Capt. Murphy recovered from the wreck site of the Commodore.

that a mine had sunk the ship but could not identify the party or government responsible for the disaster. (Later investigations have suggested that the *Maine* may have been destroyed by a fire originating in one of her own coal bunkers). Regardless of the cause, public opinion compelled the U.S. Congress to officially declare war on Spain on April 25, 1898.

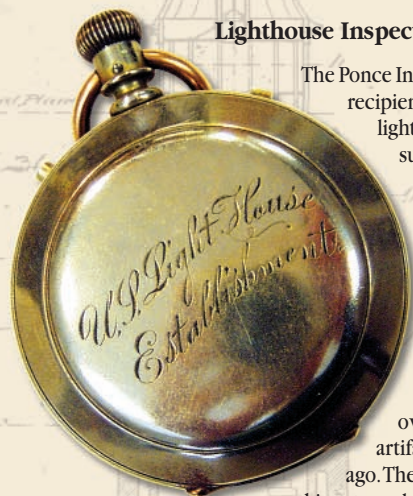
With a waning ability to control her overseas colonies and armed with an outdated navy, Spain soon found herself no match for the United States on both land and sea. Suing for peace, Spain was forced to renounce her claims to Cuba, and to turn ownership of the Philippine Islands, Guam, Porto Rico, and other West Indies holdings over to the United States. Now established as a major military power, the United States took the first steps towards realizing its own colonial aspirations, and by remaining in Cuba as "stewards" of the new republic, would maintain control over the island's affairs for another 50 years.

The Ponce de Leon Inlet Light Station has recently opened a new exhibit to more completely tell the story of the filibustering expeditions to Cuba, the *Commodore*, and writer Stephen Crane's involvement in the *Commodore's* sinking. Plan to visit this new exhibit in the Principal Keeper's Dwelling soon! If you are a teacher, multi-disciplinary and pre-visit lesson plans for elementary and middle school students will be ready soon. These include Spanish language elements, history, language arts and more. Contact Bob Callister at 386-761-1821, extension 18, for information.



Newspapers in the United States, already known for promoting pro-Cuban sympathies and for their "yellow journalistic" style, wrote inflammatory stories placing the blame for the ship's destruction on Spanish sabotage and popularized pro-war slogans like "Remember the Maine". A quickly assembled U.S. Navy investigation concluded

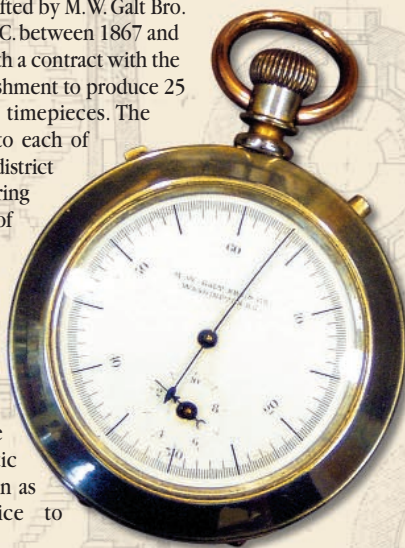
OBJECT OF THE QUARTER



Lighthouse Inspector's Timing Watch

The Ponce Inlet Light Station was the recipient of a valuable piece of lighthouse history this past summer. The gift, a silver-plated United States Lighthouse Establishment (USLHE) timing watch, was donated to the museum by Jean McVicar, widow of Arthur McVicar, the man to whom ownership of this rare artifact passed many years ago. The excellent condition of this extremely rare timing watch (only a few are publicly known to exist) is a testament to Mr. McVicar's care and appreciation for historic time pieces over the years.

The stopwatch was crafted by M.W. Galt Bro. & Co. of Washington D.C. between 1867 and 1875 in accordance with a contract with the U.S. Lighthouse Establishment to produce 25 of these very special timepieces. The watches were issued to each of the Establishment's 24 district supervisors for use during their formal inspection of each light station within their districts. The District Inspector would use the hand-crafted watch to time the rotation of each beacon so as to ensure it demonstrated the unique characteristic assigned to each station as listed in the "Notice to Mariners".



Founded in 1802, Galt & Bro. Jewelers remained a privately owned company throughout its many years of operation. The last owner having the Galt name was Edith Bolling Galt, who would later become the second wife of President Woodrow Wilson. The M.W. Galt Co. closed in 2001 after nearly 200 years of being in business. At the time of its closing, the venerable company held the honorable distinction of being the oldest continually operated business in the District of Columbia. This rare and historical Lighthouse Inspector's watch will eventually be put on display in the Second Assistant Keeper's Dwelling as part of a new exhibit devoted to our outstanding collection of Lighthouse Establishment time pieces.



LIGHTHOUSES OF THE WORLD

The Lighthouse at the End of the World

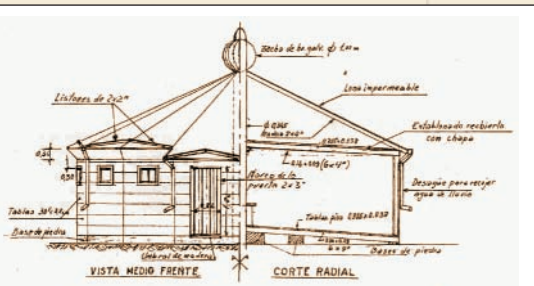
Located on the eastern end of the Isle de los Estados, a large island on the southern tip of South America, and separated from the mainland by the Strait of Le Maire, the San Juan de Salvamento Lighthouse is the oldest beacon in Argentina. Commanding a spectacular view of the turbulent waters around Cape Horn from atop a 254 ft. cliff, the sight of this lonely beacon must have elicited strong emotions from many a crew as their ship sailed slowly by. For those heading West, the lighthouse must have filled many with emotions of dread, fear, and excitement as they ventured into some of the roughest seas on earth. For others heading East, the beacon may have been a welcome sight for their weary eyes, its blinking light announcing their hazardous journey around the horn had finally come to an end. The lighthouse also served as the last land-based reference point for ship navigators bound for Antarctica.



Movie poster of "The Light at the End of the World" based on Jules Verne's novel "The Lighthouse at the End of the World".

Despite its remote location and hostile environment (or perhaps because of it), the San Juan Salvamento Lighthouse became the subject for one of literatures most celebrated authors. Written by Jules Verne and published posthumously after his death in 1905, "The Lighthouse at the End of the World" is a suspense thriller about a lone lighthouse keeper's struggle for survival after the San Juan de Salvamento lighthouse is captured by band of ruthless pirates. The story, which some claim was written by Vern's son Michel, was well received by the public and eventually made into a major motion picture "The Light at the End of the World" starring Kirk Douglas, Yul Brynner, and Samantha Eggar in 1971.

Constructed of wood in 1884, this unassuming octagonal building was 21 feet tall and crowned with a gray metal globe. The lighthouse's beacon shone out over the tumultuous waters of Drake's Passage through a square window in the keepers' quarters. The beacon's characteristic was a white light flashing twice with three-second intervals every 15 seconds. A life-saving post was constructed not far away to rescue hapless sailors who made it to shore after their vessels sank in the violent seas.



Copy of the original plans for the San Juan de Salvamento Lighthouse and beacon

Although the San Juan de Salvamento lighthouse was replaced by the Faro Ano Nuevo lighthouse in 1902, the remains of the original San Juan Salvamento structure were saved and relocated to the Ushuaia Maritime Museum with the assistance of the Argentine Navy in 1997. In 1998 a group of Jules Verne enthusiasts, coordinating their efforts with the Argentine Navy, rebuilt the lighthouse on its original site overlooking Drakes Passage where the Atlantic and Pacific collide. The new lighthouse, whose construction was based on drawings of the original, is listed as an operational aid to navigation and continues to fulfill its original mission of guiding ships at sea.



This recreation of the original San Juan de Salvamento Lighthouse was built by a group of Jules Verne enthusiasts.

